



# ethics champions

A time to appreciate the people and providers who stand up for healthcare ethics



*"Science seeks to do what's good for the human being. The Center, which emphasizes the ethical implications of healthcare, seeks to do what is good for the health of the human being. Their end is the same."*

ROSEMARY FLANIGAN, PhD

*Board Chair, Center for Practical Bioethics, 1991*

*Program Associate, Center for Practical Bioethics, 1992-2010*

*Professor Emeritus, Rockhurst College, Retired*

CENTER FOR PRACTICAL BIOETHICS  
2019 RETROSPECTIVE · 2020 RESPONSE TO COVID-19

# STANDING WITH ETHICS CHAMPIONS TO REBUILD OUR HEALTH SYSTEM

Nine months ago when we chose the Ethics Champions theme for the 2020 Annual Dinner, we could have never anticipated the significance of its meaning or impact.

Doubtless, many of the Champions that our institutional partners nominated to be honored in our original evening program consider themselves simply colleagues among a vast legion of champions who have literally and willingly placed their lives on the line daily for weeks in a way they never dreamed would be asked of them.

We honor them all in tribute to what they represent in the face of unrelenting and overwhelming adversity. We honor their courage, conviction, perseverance and spirit in responding to the greatest global health tragedy in more than a century. We honor their “doing the right thing” and their belief that in doing so something better comes of it.

## Confronting Ethical Challenges

In this report you will find a summary of the Center’s work in 2019 and a brief overview since the coronavirus pandemic redirected our efforts. The 2019 accomplishments are significant, and we remain grateful for your support of those programs and our eagerness to return to them in the future. This report also demonstrates the Center’s ability to respond quickly to the needs of our stakeholders and constituents.

Finally, this report speaks to the importance of ethics in all our lives and livelihoods. The ethical challenges that lie ahead for this country and world are monumental and, quite frankly, a little overwhelming.

## Holding Ourselves Accountable

The devastation wreaked by this tiny virus will cause a reckoning for decades to come. It has laid bare the deep divisions and fissures of inequity and injustice in our healthcare systems. We will all be held accountable, individually and collectively, for how we raise and respond to the questions of what ought we to do, as we remain vigilant and begin to rebuild.

The Center stands with its Ethics Champions – all of them everywhere – in steadfast commitment to our core value: respect for human dignity. We must rebuild a health system that recognizes the intrinsic worth of all persons, listens to the voices of every child, youth, adult and elder of every tongue, embracing all forms of ability. We must rebuild a health system, an economy and a community that measures success in terms of how the least among us is served. Justice is not a notion; it is our imperative.



**John G. Carney, MEd**  
President and CEO

**Sandra R. Stites, MD**  
Chair of the Board



## BOARD OF DIRECTORS

Sandra R. Stites, MD, Chair  
Eva Karp, DHA, MBA, RN-C, FACHE, Vice Chair  
Liza Townsend, JD, MSW, Secretary  
Tresia Franklin, CEBS, CFA, CCP, Treasurer  
John D. Yeast, MD, MSPH, Past Board Chair  
Mary Beth Blake, JD, Center Co-Founder  
Abiodun Akinwuntan, PhD, MPH, MBA  
Brian Carter, MD  
Karen Cox, RN, PhD, FACHE, FAAN  
Darrin D'Agostino, DO, MPH, MBA  
Alan S. Edelman  
Sukumar Ethirajan, MD  
Diane Gallagher  
Jane Lombard, MD, MBA  
Sam Meers  
Stephen Salanski, MD  
Mark R. Thompson, JD  
Peter M. Wilkinson

## OUR TEAM

John G. Carney, MEd  
*President & CEO*

Monica Delles  
*Operations Coordinator*

Jan Evans, CPA  
*Accountant*

Trudi Galblum  
*Marketing & Communications*

Cindy Leyland  
*Director of Program Operations*

Matthew Pjecha, MSPP  
*Program Associate*

Ryan Pferdehirt, MS, HEC-C  
*Director of Membership & Ethics Education*

Tarris Rosell, DMin, PhD  
*Rosemary Flanigan Chair*

Danetta Sloan, PhD, MSW  
*Project Consultant*

Linda Doolin Ward  
*Executive Vice President & COO*



Myra J. Christopher  
Founding President and CEO, Retired



## HOW WE DO ETHICS

As science, technology and engineering expand what we can do in medicine, questions about what we should do grow more complex and consequential. The Center for Practical Bioethics has been “doing ethics” by raising and responding to ethical issues in health and healthcare since 1984.

**PERSONAL** | Providing guidance for patients, families and clinicians struggling with ethically complex issues in medicine and research.

**PROFESSIONAL** | Teaching bioethics to healthcare providers, students, clinicians and consumers.

**POLICY** | Creating guidelines, developing programs, publishing resources and advising decision makers.



1111 Main Street, Suite 500, Kansas City, Missouri 64105

816-221-1100

[www.PracticalBioethics.org](http://www.PracticalBioethics.org)

# ETHICS IN THE TIME OF COVID-19

Since the emergence of Covid-19, the Center for Practical Bioethics has been on the front lines of our region's response, providing unique guidance on the ethical implications of the choices we are making and the actions we may have to take.

Never has the need for PRACTICAL solutions to ethical dilemmas in healthcare been greater in volume and complexity. Never have the stakes been higher in physical, social, emotional and economic impact. In the context of Covid-19, the Center is working 24/7 to provide guidance and crisis solutions to patients, families, clinicians, institutional leaders and policy makers at all levels of government, including public health and elected officials.

In less than a month, the Center has completely reoriented and redesigned its resources and programming to focus on what our region and nation need most—ethical guidance through the unprecedented Covid-19 pandemic.

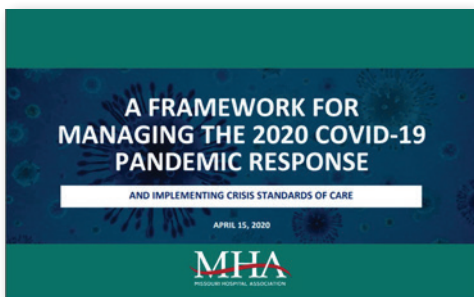
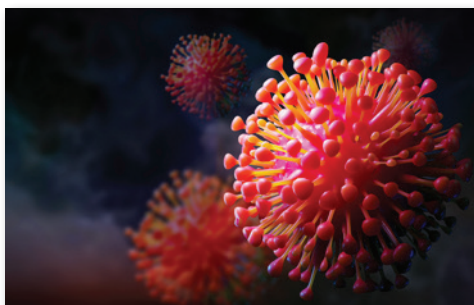
We expect these activities to evolve and expand as the pandemic progresses. The following summarizes key activities and accomplishments from mid-March to mid-April.

## For Institutions and Healthcare Professionals

- Responding to urgent requests from hospitals and long-term care facilities for ethics consultations on care for critically ill Covid-19 patients and related policy determinations.
- Coordinating the regional effort, with leaders from Missouri Hospital Association and Mid-America Regional Council (MARC) Health Care Coalition, to encourage all metro area jurisdictions to adopt model public health Crisis Standards of Care.
- Continuously providing and updating resources for more than 40 metro area healthcare ethics committees.
- Providing Covid-19 ethics training for national organizations, such as Consumer Voice (a national association for ombudsmen) and the National Nursing Home Social Work Network.
- Guiding policy makers on the impact of proposed local, state and national legislation (e.g., suspension of requirement for face-to-face patient visits).
- Publishing regular COVID ETHICS UPDATES on YouTube addressing ethical dimensions of the pandemic, with 740 subscribers as of April 24, 2020.
- Producing a weekly Covid-19 webinar series. Titles so far include *Ethics in a Pandemic*, *Duties to Care in a Coronavirus Pandemic*, *Ethical Dimensions of Quarantine and Isolation*, *Crisis Standards of Care in a Pandemic*, and *Advance Care Planning During the Covid-19 Pandemic*. More than 100 attendees required us to expand Zoom “room” size.

## For the General Community

- Enhancing advance care planning training to meet urgent need for individuals to name an agent to speak for them if they can't speak for themselves (especially for people at risk and to ensure easy access to documents/videos online).
- Educating the public to understand and accept Crisis Standards of Care (i.e., the transition from clinical to public health ethics), including collaboration with KCUR 89.3 and KCPT Channel 19.
- Encouraging appreciation for the courage and commitment of healthcare workers and how citizens can support their efforts.



# ethics champions

## **Vicky Burnett, RN, MS, Clinical Nurse Specialist, Visiting Nurse Association**

Ethics in a book is one thing. But in the real world it's a whole other ballgame. The Ethics Committee Consortium made that very clear. We learned that everybody has a perspective and everybody has a background.

## **George Flanagan, DMin, MA, Chaplain and Ethics Consultant, Retired**

At the Consortium, just hearing people talk about issues, how they would approach them, what the pitfalls are and how we can avoid them, to keep learning from other people's experiences...that's a phenomenon that we would not have if it weren't for the Center's presence in Kansas City.

## **Dr. Barbara Bollier, Kansas State Senator**

Both as a physician and as a public policy maker, the Center is able to make a very specific difference in people's outcomes and in the care that they can and will receive.

## **Jerry Wilmes, MD, Medical Director, Hospice and Palliative Medicine, Mosaic Life Care**

Serving on ethics committees, in my opinion, makes you a better clinician because it helps you think about situations from a more comprehensive and compassionate perspective. Ethics committees have been instrumental in the development and growth of our palliative care program and in helping the healthcare system navigate difficult situations.

## ETHICS COMMITTEES: **The Conscience of Healthcare**

**Bioethics** arose to address the changing face of medicine and to empower patients to share in the increasingly complex decisions that providers make in caring for them.

**Hospital ethics committees** developed in the mid-1970s in large part from the Karen Ann Quinlan case, which raised concerns about patient and surrogate rights to make decisions, including decisions about foregoing medical treatment. The President's Commission for the Study of Ethics in Medicine and Biomedical and Behavioral Research addressed those concerns in the 1980s, resulting in the formation of the first hospital ethics committees.

**The Center** launched the Kansas City Regional Ethics Committee Consortium in 1986, which remains the oldest continuously operating consortium of its kind in the nation. In 1992, the Joint Commission began requiring hospitals to have a "clinical ethics mechanism" to receive accreditation.

## DOING ETHICS

Ethics committee members apply reasoned analysis and discourse to support clinicians, patients and families through clinical and organizational stress points. The process typically includes these steps:

1. Gather facts.
2. Clarify ethical issues.
  - What values are in conflict?
  - What are the differences of opinion about the consequences of different actions?
3. Discuss stakeholders' interests: Who has interests? What are those interests?
4. Decide on one or more alternatives with justification for each.
5. Implement recommendations and respond to policy implications.
6. Evaluate outcomes.

High functioning ethics committees provide educational opportunities for their members and hold regular reviews and updates of hospital policies that involve ethical considerations.

## AUTHENTIC VOICE

The Center's longstanding work in this arena positions it as one of the nation's most authentic voices in championing ethics in healthcare across a broad spectrum of providers.

Our original goals remain critical to ethics in health today: To educate about what it means to "do ethics" well, to develop and review sound health ethics policy, and to conduct thorough consultations to address complex cases.

# ethics champions

Quality healthcare relies on ethics-rich environments. Ethics-rich environments rely on ethics champions. From CEOs and clinical staff to volunteers serving on ethics committees, healthcare institutions need ethics champions at all levels of their organizations.

The Center for Practical Bioethics invited healthcare providers and health systems throughout the Kansas City region to nominate such individuals. We planned to honor the 23 individuals they nominated at the 2020 Annual Dinner in April. While the emergence of the Covid-19 pandemic prevented us from holding the Dinner, the leadership of ethics champions is needed now more than ever.

|                              |   |
|------------------------------|---|
| <b>Cathy Boutte</b>          | Overland Park Regional Medical Center, HCA Midwest Health |
| <b>Kathy Davis</b>           | University of Kansas Medical Center - Pediatrics          |
| <b>Lorraine Duncan</b>       | Centerpoint Medical Center, HCA Midwest Health            |
| <b>Brandy Ficek</b>          | Stormont Vail   |
| <b>Kara Hess</b>             | AdventHealth Shawnee Mission                              |
| <b>Sarah Hon</b>             | North Kansas City Hospital                                |
| <b>Ronn Huff</b>             | HCA Healthcare, Brentwood, TN                             |
| <b>Edwin T. Kraemer</b>      | Truman Medical Center, Lakewood                           |
| <b>Carmen Lile-Henley</b>    | Liberty Hospital  |
| <b>Leslie McGrew-Kaufman</b> | Kansas City Hospice & Palliative Care                     |
| <b>Laura Miller-Smith</b>    | Children's Mercy Hospital - Hospital Hill                 |
| <b>Sarah Oland</b>           | Midwest Transplant Network                                |
| <b>Lisa A. Osgood</b>        | Truman Medical Center, Health Sciences District           |
| <b>Bethany Ruhl</b>          | Saint Luke's Health System - Crittenton                   |
| <b>Nancy Schroeder</b>       | VNA Visiting Nurse Association                            |
| <b>Sally Schwab</b>          | Mosaic Life Care - St. Joseph                             |
| <b>Karlie Speicher</b>       | Saint Luke's Health System - Plaza                        |
| <b>Noreen Thompson</b>       | University of Kansas Medical Center                       |
| <b>Jennifer Tieman</b>       | Research Medical Center, HCA Midwest Health               |
| <b>Kimberly Williams</b>     | Phelps Health, Rolla, MO                                  |
| <b>Jerry Wilmes</b>          | Mosaic Life Care - Maryville                              |
| <b>Cathy Wisor</b>           | Saint Luke's Health System - North                        |
| <b>Julia Woods</b>           | Saint Luke's Health System - South                        |

Read stories about Ethics Champions at <https://practicalbioethics.org/ethics-champions>.



## WE REMEMBER RICHARD PAYNE, MD

Our colleague and friend, Dr. Richard Payne, died on January 3, 2019, from complications related to cancer. An internationally recognized expert in neurology, oncology, pain management, disparities and palliative care, Dr. Payne was in his sixth year as the John B. Francis Chair at the Center at the time of his death.

Following memorial celebrations that coincided with the 2019 Annual Dinner, the Center embarked on a months-long process to name a successor to the John B. Francis Chair. We anticipated concluding the selection process and announcing the successor at the 2020 Annual Dinner. Due to the coronavirus, plans have been temporarily delayed.



# 2020 ANNUAL DINNER

The 2020 Annual Dinner, to have taken place on April 21 at the Kansas City Marriott Downtown – Muehlebach Tower, was not held due to the coronavirus. It is noteworthy that Terry Rosell, the person to whom we would have presented the Vision to Action Award in person at the Dinner, is now in the forefront of action in our community responding to the ethical issues raised by the pandemic.

The Center also wishes to thank the Dinner's Honorary Co-Chairs, Joan and Steve Israelite and Debbie Sosland-Edelman and Alan Edelman, for their time, effort and commitment to ensuring the event's virtual success.

## VISION TO ACTION HONOREE



**Tarris Rosell, PhD, DMin** | Dr. Rosell joined the Center in 2004 where he has held the Rosemary Flanigan Chair since 2006. On behalf of the Center, he recently completed his sixth year as chair of the Department of Bioethics at Kansas City University of Medicine and Biosciences and eleventh year providing ethics consultation for The University of Kansas Health System, where he directs the ethics consultation service and teaches at the University of Kansas School of Medicine.

Dr. Rosell publishes frequently in addition to teaching and lecturing internationally. He is also a Professor of Pastoral Theology at Central Baptist Theological Seminary, Shawnee, Kansas. He holds doctoral degrees in Pastoral Theology from Colgate-Rochester Divinity School and in Ethics and Society from Vanderbilt University.

Terry makes pottery for art's sake and for three orphaned kids in Kenya, to whom all proceeds are donated. He and his wife, the Reverend Dr. Ruth Rosell, have four children and recently delighted in becoming grandparents.

## HONORARY CO-CHAIRS



**Deborah Sosland-Edelman and Alan Edelman** | Debbie is the Executive Director of the Sosland Foundation, where she administers grants to social welfare, education, health-related, civic, cultural arts and Jewish organizations in the Kansas City area. She earned her doctoral degree in developmental and child psychology from the University of Kansas and her undergraduate degree from Smith College.

Alan is the former Director of Engagement and Leadership Development for the Jewish Federation of Greater Kansas City. He earned his Master's Degree in Jewish Education from the Jewish Theological Seminary, New York City. He also holds a Master's Degree in Education Policy and Leadership from the University of Kansas. In addition to serving on the board of the Center for Practical Bioethics, Alan's volunteer efforts focus on inter-faith and multi-cultural programming, including guest theologian for many churches, universities and seminaries.

Combined, Alan and Debbie serve or have served on more than 35 local, regional, national and international boards and committees. They are the proud parents of three children and two grandchildren.



**Joan and Steve Israelite** | Joan was the founding President and CEO of the Arts Council of Metropolitan Kansas City from 1999 to 2009. Currently, she assists the Kauffman Center for the Performing Arts' fundraising efforts. Prior to leading the Arts Council, she served as development director for several Kansas City arts, youth and family nonprofit organizations. She earned her nursing degree from St. Francis School of Nursing in Evanston, Illinois, and bachelor of arts from St. Francis College in Joliet, Illinois.

Steve graduated from the University of Illinois School of Pharmacy. He and Joan served in the Peace Corps together shortly after they were married in 1964. They have two sons and six grandchildren. Steve's consistent focus as an official in the U.S. Department of Housing and Urban Development, as founding executive director of the Jewish Heritage Foundation from 1994 to 2015, and since retirement has been social justice.

Four years ago, Steve was seriously injured crossing 63rd Street in Brookside, followed shortly by a stroke. Steve credits his remarkable recovery to God, Joan, his family and the many doctors, nurses and therapists who cared for him.

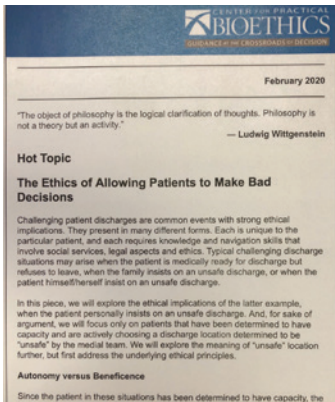
# 2019 HEALTH ETHICS IMPACT REPORT



## THANK YOU FOR MAKING HEALTH ETHICS MATTER.

From providers in clinical practice to patients and families making difficult choices for themselves and loved ones, your support helps thousands each year.

We hope you take pride in the values you advance through the accomplishments described in this report.



## ETHICS EDUCATION AND CONSULTATION

### PROFESSIONAL MEDICAL EDUCATION

#### Kansas City Regional Ethics Committee Consortium

Launched webinars and workshops for more than 300 individual Consortium members representing three dozen providers. Provided prompt response to requests for resources to address critical, time-sensitive cases and issues.

#### Health Ethics Dispatch

Began publishing a monthly resource addressing issues and needs identified by ethics committees. In 2020, we will expand the Dispatch's reach to students, educators and administrators and introduce an online discussion opportunity.



#### Clinical Ethics Service

Introduced new "Ethics Direct" model for providing member organizations with ethics education, consultation and support that the Center has offered for nearly 30 years, as well as more intensive and individualized consultation and training through Ethics+.



#### Medical Student Education

Chaired the Bioethics Department at Kansas City University of Medicine and Biosciences (KCU) and provided bioethics instruction to 860 students, including 130 enrolled in KCU's dual degree medicine/bioethics program.

#### Faculty Services

For The University of Kansas Health System (TUKHS), oversaw more than 100 ethics consultations. Provided ethics consultations for the Heart Transplant program and Blood and Marrow Transplant team. Co-chaired the Hospital Ethics Committee. Served as ethics faculty for student, residency and fellowship case conferences.





## CONSUMER GUIDANCE

Helped more than 100 patients, families and practitioners who called the Center for guidance in a health crisis to:

- Advocate and sort through options
- Obtain advance care planning documents and properly execute them
- Ask for ethics and palliative care consultations
- Clarify how to present concerns to family members and providers
- Articulate ethical concerns regarding quality and access to care

## COMMUNITY EDUCATION

### Current Issues in Bioethics Lecture Series

With Kansas City University School of Medicine and Biosciences, presented 5 lectures by speakers of national stature to 430 KCU medical students and hundreds of others online.

### Flanigan Lecture

The 25th annual lecture, *America's Obsession: Having It All Without Paying the Price*, at the Jewish Community Center of Greater Kansas City featured Jonathan Moreno, PhD.

### Berkley Symposium

The 12th annual symposium explored *Perspectives on the Ethics of Genetic Engineering*, with panelists Jason Glenn, PhD, George Gotto, PhD, and Carla Keirns, MD, PhD, with Jonathan Moreno, PhD, moderating.

### Staff Presentations and Publications

Presented more than 70 professional education lectures, conferences, workshops, discussion groups and community talks. Published articles for peer-reviewed and mass media outlets. Appeared in 6 local TV/radio stories.

### Stakeholder Communications

- PracticalBioethics.org, which provides free access to 3,000+ resources, received 509,200 pageviews in 2019.
- 10,000 people subscribe to our monthly e-newsletter.
- 1,000 supporters receive our print newsletter, *Practical Bioethics*, in the mail.
- Thousands keep up to date with the Center on Facebook and Twitter.





## PATIENT-CENTERED DECISION MAKING

### Advance Care Planning in African American Faith Communities

Completed comprehensive literature review of best practices to improve African American participation in advance care planning. End-of-life academic researchers and faith-based organizations planned five regional events for 2020.

### Caring Conversations® Program and Resources

Connected more than 17,000 people with Caring Conversations® advance care planning resources, including 5,200 printed workbooks and 21,000 other resources including *Introduction to Caring Conversations®*, *Caring Conversations® Starter* and *Caring Conversations®...Continued*.



### Bi-State Transportable Physician Orders for Patient Preferences (TPOPP) Initiative

Presented 7 onsite/webinar trainings, published a new *Clinical Guidebook for Healthcare Providers in Kansas and Missouri*, and approved guidance documents for out-of-hospital Do Not Resuscitate rules. More than 62 reams of TPOPP forms and 75 *Guidebooks* were purchased by Kansas and Missouri providers, demonstrating growing adoption of standardized medical order sets for seriously ill persons living with life-limiting illnesses.

### Art of the Wish

Marn Jensen and Andy Newcom began translating the wisdom of older adults into works of art for an exhibition that was originally planned to open in Fall 2020. The artists are also designing a presentation based on the exhibition for student healthcare professionals to convey the importance of listening to their patients.



## EMERGING ISSUES AND SYSTEMS CHANGE

### Artificial Intelligence in Healthcare

The Center, in collaboration with Cerner, gathered 60 healthcare innovators and thought leaders to address ethical considerations raised by AI and its potential to produce biased predictions. Participants identified 360 elements of AI development and implementation needed to ensure fairness, inclusion, accountability, transparency, data privacy and security, and reliability and safety. The Center and Cerner are analyzing these elements and producing a report. The workshop model will be repeated for another group in Atlanta in October.



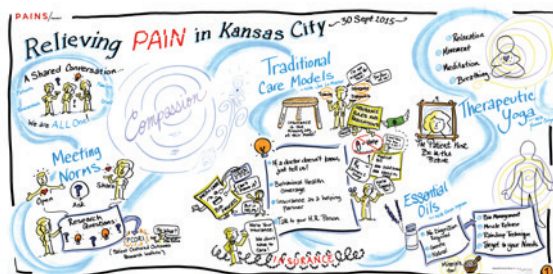
### Chronic Pain

The Center provided technical assistance to obtain funding from the Lovell Foundation to support the formation of the Alliance to Advance Comprehensive Integrative Pain Management. The AACIPM will host the Pain Policy Congress in 2020 to advance evidence-based, person-centered pain care.



### PAINS-KC

PAINS-KC provides a voice through education and advocacy for those who live with pain. PAINS-KC Citizen Leaders serve as patient instructors for some of the American Academy of Family Physicians continuing medical education courses.

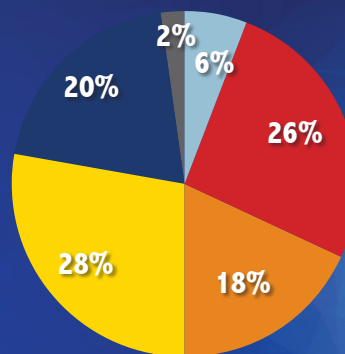


## 2019 FINANCIALS\*

DOLLARS ROUNDED TO THE NEAREST HUNDRED

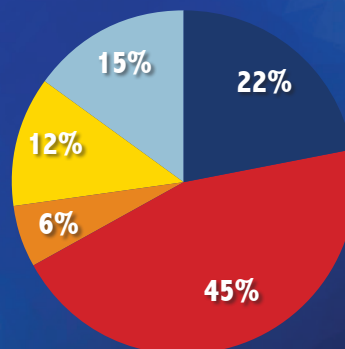
### Revenues

|                          |                    |
|--------------------------|--------------------|
| GRANT INCOME             | 99,800             |
| ENDOWMENT DISTRIBUTIONS  | 401,400            |
| EARNED INCOME            | 278,100            |
| DONATIONS AND MEMBERSHIP | 423,200            |
| SPECIAL EVENTS           | 299,900            |
| OTHER                    | 28,500             |
| <b>TOTAL</b>             | <b>\$1,530,900</b> |



### Total Expenses

|                                    |                    |
|------------------------------------|--------------------|
| AGING AND SERIOUS ILLNESS          | 331,000            |
| ETHICS EDUCATION AND CONSULTATION  | 676,900            |
| EMERGING ISSUES AND SYSTEMS CHANGE | 90,300             |
| MANAGEMENT & ADMINISTRATION        | 180,500            |
| FUNDRAISING                        | 225,600            |
| <b>TOTAL</b>                       | <b>\$1,504,300</b> |



\* UNAUDITED

**CIRCLE OF FRIENDS** *We are thankful for the generous support of donors to the Center for Practical Bioethics from January 1, 2019 - April 10, 2020. We sincerely regret any errors or omissions.*

**LEGACY SOCIETY**

*The Legacy Society was established in 2009 as a way for individuals to make provisions for the Center for Practical Bioethics in their estate plans.*

**Judith S. and James M. Beck**

**Joan\* and Bert Berkley**

**Mary Beth Blake**

**Donna K. Blackwood\***

**Drs. Barbara and Rene Bollier**

**Dianne and John Carney**

**Myra and Truman Christopher**

**Kelley and Bill Colby**

**Karen Cox**

**Karren King Crouch and  
Dr. Thomas Crouch**

**Helen C. Emmott**

**Jo Ann Field**

**J. Scott Francis**

**Robert Lee Hill**

**Carol N. and Steven E. Lanard**

**Sandra Doolin Mellinger**

**Ronald A. Neville**

**Paula and Clay Porsch**

**Andrea and E. Wynn Presson**

**Charles N. Romero**

**Tarris Rosell**

**Mary M. and David L. Sallee**

**Dianne C. Shumaker**

**Hans W. Uffelman\***

**Linda D. Ward and Terrence R. Ward**

For information about joining the Legacy Society, contact Linda Ward at 816-979-1362 or [lward@PracticalBioethics.org](mailto:lward@PracticalBioethics.org).

**\*Deceased**

Phyllis and Erwin Abrams  
AdventHealth Shawnee Mission  
Titilayo and Abiodun Akinwuntan  
Ann Allegre, M.D.  
American Century Investments Foundation  
Clay and Michelle Anderson  
Barbara and Raymond Andrews  
Anheuser Busch Companies  
Anonymous  
Barbara Ashe  
Atterbury Family Foundation  
Jennifer and Bud Bacon  
Gary Baker and Patricia A. Coleman Baker  
Carol Barnett  
Neil Barnett  
Julia Bartak  
Ann and G. Kenneth Baum  
Susan and David Beck  
James and Judith Beck  
Dr. Loren Berenbom and Marilyn Berenbom  
Andy Berkley  
Bert Berkley, in memory of Joan Berkley  
Maureen and William Berkley  
Erin and Andrew Billingsley  
BJC Health System  
Phil Black, M.D.  
Mary Beth and Mike Blake  
Blue Cross and Blue Shield of Kansas City  
BMO Harris Bank  
Barbara and Rene Bollier  
John and Peg Borden  
Cathy Boyer-Shesol  
Aaron Brake  
Linda and Gus Breytspreek  
Carol and Stanley Buller  
Vicky and Roger Burnett  
Largo and John Callenbach  
Dianne and John Carney  
Peter Carney  
Angel and Brian Carter  
Cynthia Carter Perrilliat  
Cerner Corporation  
Chamberlain University  
Martha Childers  
Children's Mercy Hospitals & Clinics  
Ellen and Jonathan Chilton  
Margie Christofferson  
Myra and Truman Christopher  
Donna Gould Cohen  
Ambassador Allan Katz and Nancy Cohn  
Bunni and Paul Copaken  
Marcia J. Corbett  
Amy and Kyle Cordes  
Country Club Bank  
Dr. and Mrs. Glendon Cox  
Karen Cox, Ph.D.  
Suzanne C. Crandall  
Beth Creason  
Catherine Creed  
Christopher Crenner, M.D.  
Crossroads Hospice Charitable Foundation  
Karren and Thomas Crouch  
Timothea and Darrin D'Agostino  
Diane Deese  
Karen and Brian Divilbiss  
Nick and Lynn Douthat  
Betty and William Drees  
Janet and Daniel Dubrava

Debbie Sosland-Edelman and Alan Edelman  
Mary and George Edwards  
Leslie Mark and Mark Eisemann  
Jerry Ensein and Hannah Harris  
Sarada Katragadda and Sukumar Ethirajan  
Jan and Dave Evans  
Ewing Marion Kauffman Foundation  
Connie Fahey  
Susan Fenner  
Sheryl A. Feutz-Harter  
Financial Counselors, Inc.  
Lyndia and George Flanagan  
Daniel Flanigan  
Rosemary Flanigan  
Kathleen Foley  
Alan Forker and Anne Lewis  
Philip Fracica  
The Francis Family Foundation  
Tresia and John Franklin  
SuEllen Fried  
Frontiers: The Heartland Institute for Clinical & Translational Science  
Susan C. Fry, RN  
Betse M. Gage, M.D.  
Trudi Galblum and David Feingold  
Lisa Geer  
David Gentile  
Tom and Rhonda Gerke  
Barbara and John Gilbert  
Perri Ginder and Fred Shuler  
Patricia and Gilbert Gonzales  
Theresa Gordon  
Erin and Steve Gorny  
Richard Green  
Kathy J. Greenlee and Deborah Merrill  
Griggs Family Foundation  
H&R Block Foundation  
Carol Hafeman, RN  
Jill and Don Hall  
Laura and David Hall  
The Hall Family Foundation  
Hallmark Cards, Inc.  
Ronald P. Hamel, Ph.D.  
Susan Hammer  
Laura Hanson, M.D.  
Hargroves Family Foundation  
Shirley K. Haspel  
HCA Midwest Health  
Shirley and Barnett Helzberg  
John Hennessy  
Jean Hiersteiner  
Ellen and Irvine Hockaday  
Sharon and John Hoffman  
Sarah and Jeffrey Hon  
Ann and Bill Howie  
Mary Ann Hull  
Alicia and William Jennings  
Joan and Bert Berkley Blue Heron Foundation  
John and Wauna Harman Foundation  
John Knox Village  
Becky J. Johnson  
Linda and Carl Johnson  
Richard L. Jungck  
Deborah Kaercher  
Kansas City Hospice & Palliative Care  
Kansas City University of Medicine and Biosciences (KCU)  
Ellen S. Karp  
Eva and Jeffrey Karp

Erin Keith-Chancy  
Joyce Kinney  
Paula Kitt  
Donna and Kenneth Klassa  
Dena Klein  
James Klein  
Jerry Kolb, MDiv  
Nathan Kottkamp  
Rachel B. Krantz and Edward Goldstein  
Sandy Kuhlman  
Lawrence Memorial Hospital  
Dr. Carol Leal  
Cindy and Dave Leyland  
Liberty Hospital  
Dorothy Lohmeyer  
Jane and Charles Lombard  
Lowenstein Family Supporting Foundation  
Barbara Lukert  
Linda and Mike Lyon  
Carl E. Martin  
Jackie and Henry Massman  
Michael and Judy May  
Carol and Ron McAdoo  
McBride, Lock & Associates  
Amelia McIntyre  
Bev and Richard McKittrick  
Martina and C. Patrick McLarney  
Julie and Sam Meers  
Sandra and Dick Mellinger  
Menorah Medical Center Medical Staff  
Marilyn and Kurt Metz  
Midland Care Connection, Inc.  
Midwest Transplant Network  
Midwest Trust  
Susan and Neal Mielke  
Karen L. Miller  
Susan and Steve Miller  
Missouri Delta Medical Center  
Missouri Humanities Council  
Sarabeth Moore  
Karin and Richard Morgan  
Morgan Family Foundation  
Mosaic Life Care  
Alana Muller and Marc Hammer  
Janice Myers and Carl M. Myers  
Deborah Smith and Mark Myron  
Mary and David Nagel  
Maureen and George Noonan  
North Kansas City Hospital  
Joshana and Stefan Offenbach  
Margaret Overton  
Karen and Steve Pack  
Linda and George Parkins  
Partners in Primary Care  
Anne and Craig Patterson  
Terrie Payne  
Judith Peres  
Tammy Peterman  
Barbara and Donald Potts  
Mary Jo Powell  
Julie L. Quirin  
Susan and Brian Ramza  
Research Medical Center - Medical Staff  
Jama Rice and Carl Budke  
Ruth and Tarris Rosell  
Janice and Haynes Ross  
Sarah Rowland  
Jane and Larry Rues  
Charles Sabatino  
Carol and Harold Sader

James Gary Sage  
Saint Luke's Health System  
Phyllis and Stephen Salanski  
Salina Regional Health Center  
Kirstin Salzman  
Samuel U. Rodgers Health Center  
John Santora  
Karen Schoettlin  
Sally Schwab  
William Price Schwalbe  
Howard I. Schwartz, M.D.  
Seigfried Bingham  
Marny and John Sherman  
Dianne Shumaker and Robert Southard  
Jim Silber  
Laura Curry Sloan and Peter Sloan  
Dr. David Slusky and Dr. Joanna Slusky  
Dr. Ken Sonnenschein and Sheila Sonnenschein  
Sosland Foundation  
Cindy Spaeth  
Spencer Fane  
John Spertus  
Jim and Lisa Spigarelli  
Mary Ann and Randy St. Clair  
St. Joseph Medical Center - Medical Staff  
Sarah and Kelvin Starnes  
Stinson Leonard Street LLP  
Sandra and Steven Stites  
Stormont Vail Health  
a store named STUFF  
Angela and Charles Sunderland  
Sunflower Foundation  
Sunflower Neonatology Associates, LLC  
Swope Health Services  
Marvin Szneler  
Greg Terman, M.D.  
Dennis and Barbara Tharp  
Tina and Claude Thau  
Judith J. Thomas  
Becky and James Tilden  
Nancy Tilson-Mallett and Grant W. Mallett  
Liza and Guy Townsend  
Truman Medical Center Charitable Foundation  
Sharon and Samuel Turner  
UMKC School of Medicine  
University of Kansas - History & Philosophy of Medicine  
University of Kansas Medical School - School of Health Professions  
University of Kansas Health System  
University of Kansas Health System - St. Francis Campus  
University of Kansas Medical School - School of Nursing  
Milanka Van Osdol  
Victor E. Speas Foundation, Bank of America-Trustee  
VNA Visiting Nurse Association  
The Wally Foundation, Inc.  
Linda and Terry Ward  
Holly and Lynn Webster  
Gene Wilson  
Windsor Place At Home Care, LLC  
Lucia D. Wocial, PhD, RN, FAAN  
Sheridan and Bob Wood  
Janet Wouffe  
Barbara and John Yeast